

ALUMINUM
WINDOWS

T2040 Series

4" Thermally-Broken Projected Window



The D8 Aluminum T2040 Series Thermally-Broken Projected Window is a high-performance window that utilizes the Insulbar® System for thermal insulation. Insulbar® technology places glass reinforced nylon struts in the frame, which prevents the transfer of heat between interior and exterior sources. This significantly strengthens the window's thermal performance characteristics.

The T2040 Series is ideal for heavy commercial projects and delivers exceptional air, water and structural performance to meet the most stringent building requirements. It has been tested in accordance with AAMA/WDMA/CSA/101/I.S.2/A440-08 (NAFS-08).

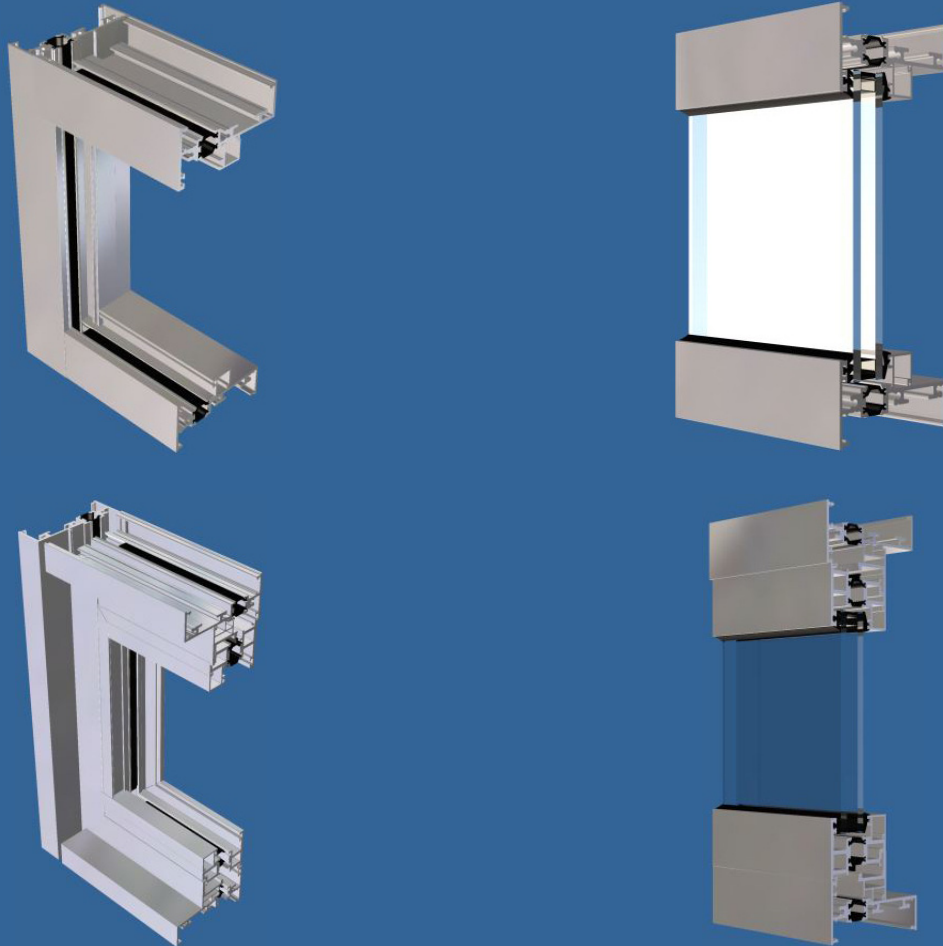
The T2040 Series Thermally-Broken Projected Window comes in a wide variety of custom painted and anodized finishes. It also comes with an industry standard factory warranty.

FEATURES	RESULTS
Aluminum system	Sleek profile, long-lasting strength and durability
4" depth	Delivers structural integrity to accommodate design requirements
Pressure equalization	Superior resistance to water intrusion
Casement, awning and fixed configurations	Configurable options to accommodate design specifications
Vertical or horizontal stacking members	Allows custom designs with standard product and increases configuration options
Triple gaskets	Superior air and water performance
Thermally broken	Enhanced energy savings and performance
Factory glazed	Consistent, reliable performance and excellent quality control
4-bar hinges	Smooth operation and stability
Optional screens	Insect deterrent
Custom painted and anodized finishes	Wide variety of finishes to accommodate design specifications and customer needs

ALUMINUM
WINDOWS

T2040 Series

4" Thermally-Broken Projected Window



PERFORMANCE DATA

Type	Fixed	Awning	Casement
Air @ 6.24 PSF Per ASTM E-283	<0.01 cfm/SF	0.1 cfm/SF	0.1 cfm/SF
Water Per ASTM E-331	20 psf	12 psf	12 psf
U-Value Per NFRC-100	0.37 - 0.56	0.51 - 0.67	0.51 - 0.67