



INSIDE OR OUTSIDE GLAZING

GENERAL:

Aluminum framing consisting of perimeter, vertical and horizontal mullions shall be Pacific Aluminum Co. Series 8700 professionally engineered wall as manufactured by Pacific Aluminum, Woodinville, Washington. The wall units and accessories shall be furnished in the types and sizes indicated on the architectural drawings. The glazing contractor shall furnish all the necessary materials, labor and equipment for the complete glazing and installation of the curtain wall.

MATERIAL:

The aluminum extrusion shall be of 6063-T5 alloy and temper (ASTM 8221 alloy G.S. 10A-T5). The width and depth of the mullion shall not be less than 1-1/2" x 4". The mullion shall be engineered to withstand specified wind loads. The fasteners shall be stainless steel, aluminum, steel zinc plated in accordance with ASTM A164-71. The mullion configuration shall allow for pockets or serrated face at the inside glazing face to receive fixed elastomeric sponge gaskets or tape. The overall horizontal mullion size shall also be 1-1/2" x 4" or 2-1/4" x 2" as detailed on the architectural drawings.

The glass shall be captive at all mullions with removeable glazing bead. All horizontals shall be fully sealed to the vertical members and provisions shall be made to drain the water to the exterior at each horizontal mullion when glazed from outside. The glazing bead shall be made from an extruded aluminum with minimum thickness as 0.062".

CONSTRUCTION:

Ventilator will be mitered, reinforced with aluminum angle corner clip and mechanically staked and welded. Frame and ventilator members to be one piece, continuous with no splices. All corner joinery will be shop sealed with an elastomeric sealant as recommended by the manufacturer.

HARDWARE:

All operating handles shall be of die cast metal alloy with baked on enamel finish. U.S.-25D finish is also available. Solid bronze locking handles are also available. The hinge assembly shall be of a pair of Anderberg 4-bar heavy-duty hinges. The windows will be provided with the following hardware, Standard tenant operated hardware.

1. One pair of Anderberg 4-bar hinges.
2. One tenant operated handle for projected windows up to 4'-0" wide. Two tenant operated handles for windows over 4'-0" shall be provided.

Optional custodian hardware (Architect to specify).

Substitute the tenant operated handles of the standard hardware set with security locks. (Operated with key tool).



FINISH:

Aluminum finishing will be done in accordance with the Aluminum Association Designation for Aluminum Finishes. AA M12C22A31 or AA M12C22A41 for clear anodizing. AA M12C22A34 or AA M12C22A44 for color anodizing. Specify color a light bronze, medium bronze, or dark bronze. Optional organic coating (Kynar 500) in a color selected by the architect is available conforming to AAMA 605.2 specifications. Inexpensive organic finishes in various paint colors also available conforming to AAMA 603 specifications.

SHOP DRAWINGS:

The window manufacturer shall furnish complete details for architect's approval showing coordination with other trades, installation details, materials and work to be supplied under contract, also indicating those items furnished by other suppliers. The shop drawings shall bear a licensed structural engineer's stamp registered in the State of the project.

PERFORMANCE:

When tested in accordance with the ASTM-E283 standards, the air infiltration shall not exceed 0.036 CFM per square foot for the fixed areas at a pressure of 6.24 P.S.F. And when tested for water penetration in accordance with ASTM-E331, no water penetration shall be allowed at a test pressure of 14 PSF (75 MPH wind velocity).

INSTALLATION:

An experienced window wall erection contractor in accordance with the instructions furnished by the fabricator shall erect the windows or window wall into prepared openings and approved shop drawings. They shall be set plumb, properly aligned and securely anchored as shown on the approved shop drawings.

CLEANING:

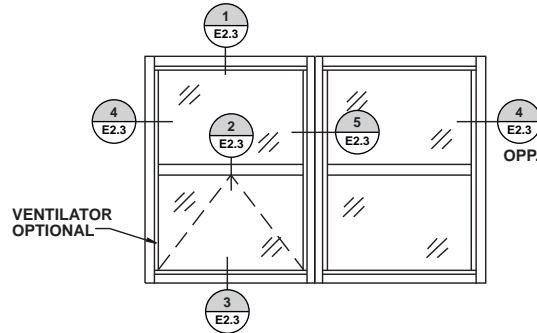
The aluminum surfaces shall be cleaned by qualified window cleaner, under separate contract.

TEST DATA FOR PERFORMANCE COMPLIANCE (AAMA 501.1)

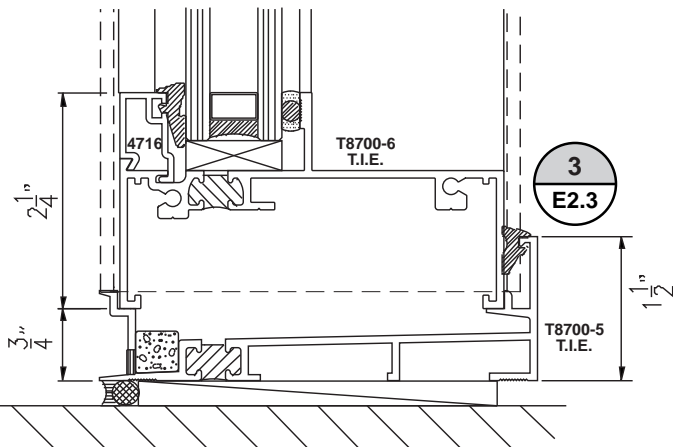
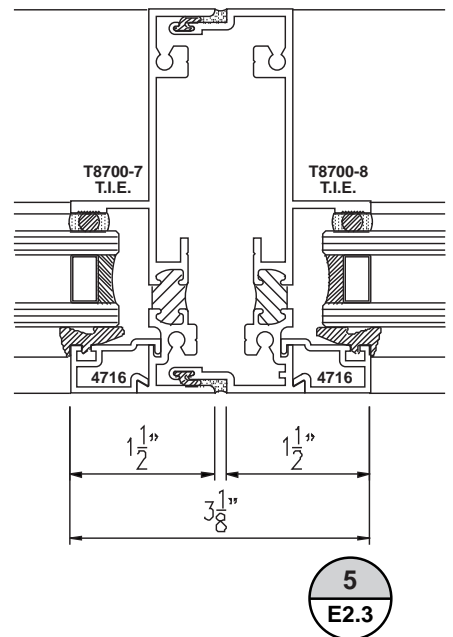
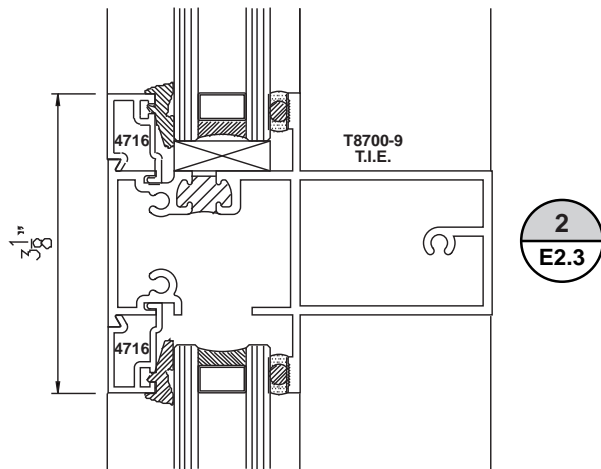
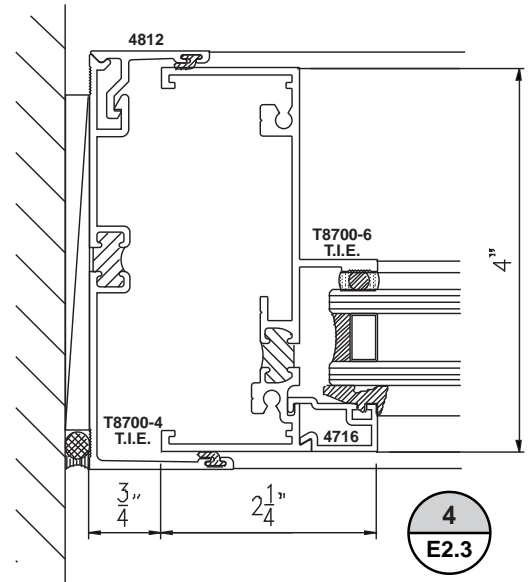
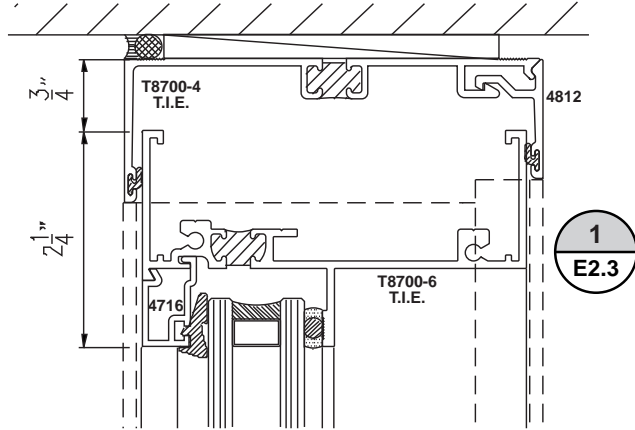
Air Infiltration Test Pressure (PSF)	Equivalent Wind Velocity(MPH)	Leakage Rate (CFM/FT)
6.24	50	0.036

ASTM-E283 Standards allow 0.060 CFM/FT.

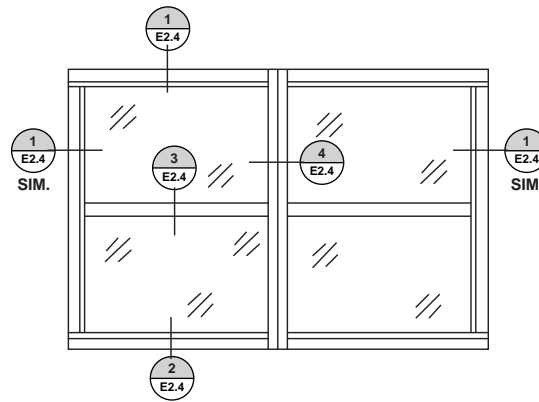
Water Resistance Test Pressure (PSF)	Equivalent Wind Velocity (MPH)	Water Leakage
6.24	50	none
10	63	none
12	69	none
14	75	none



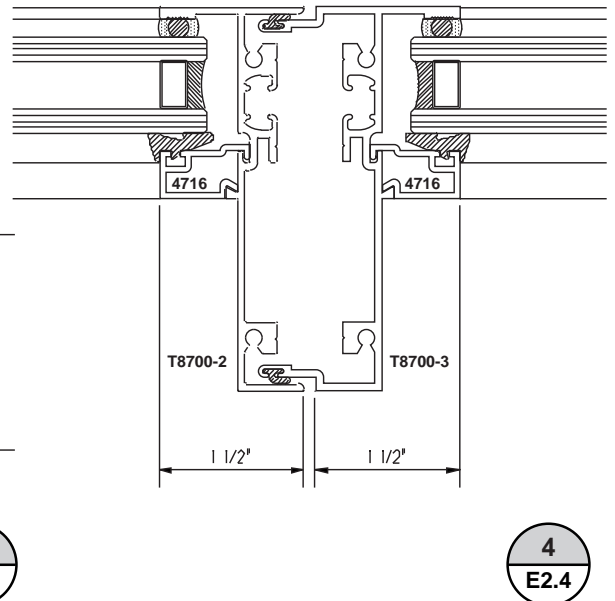
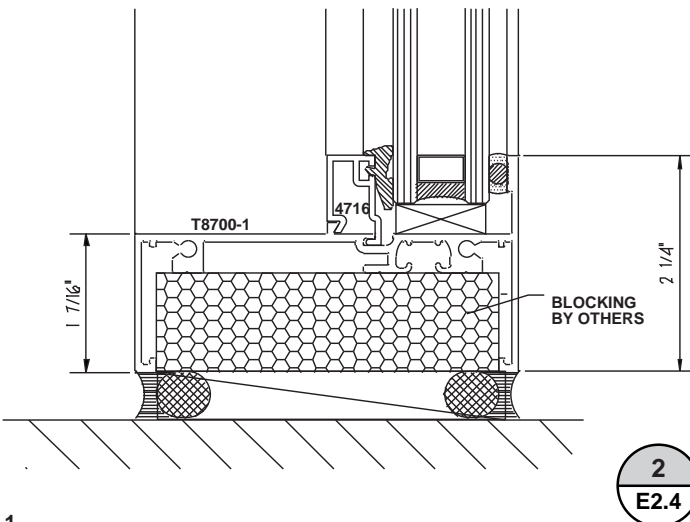
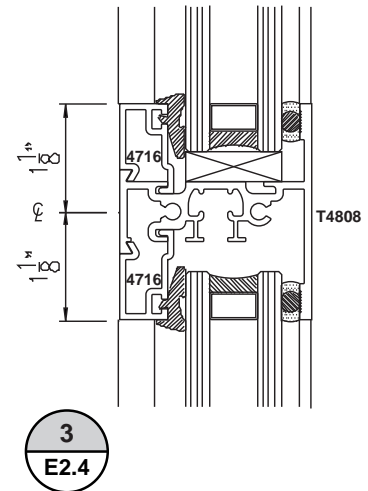
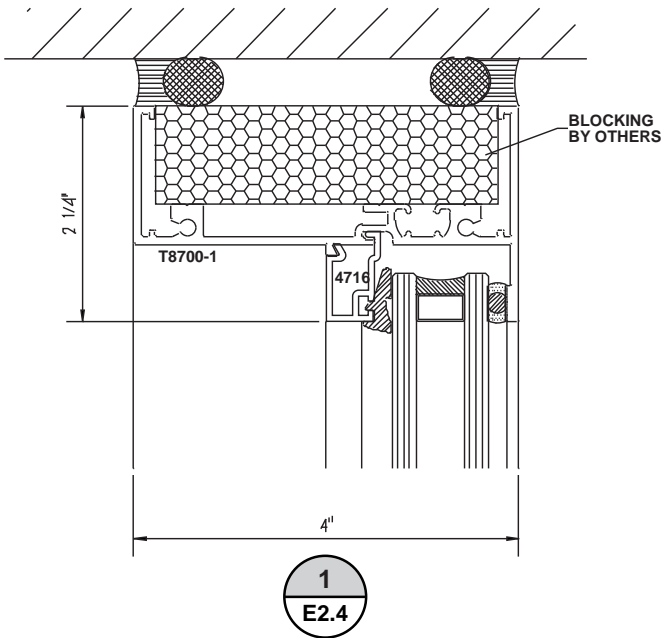
FIXED 4" WINDOW W/ SUB-FRAME



REV. 1.1



FIXED 4" WINDOW W/O SUB-FRAME



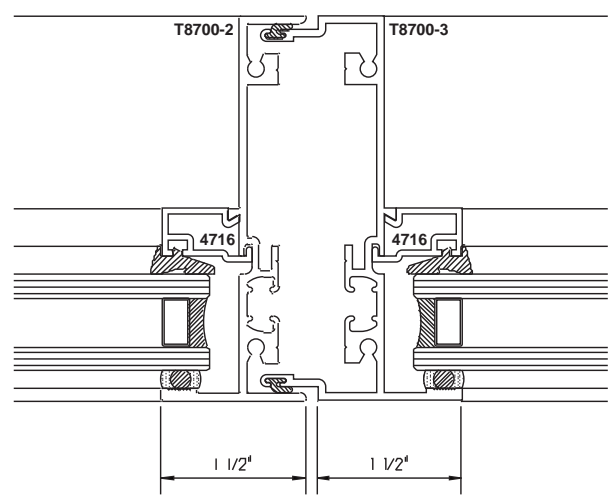
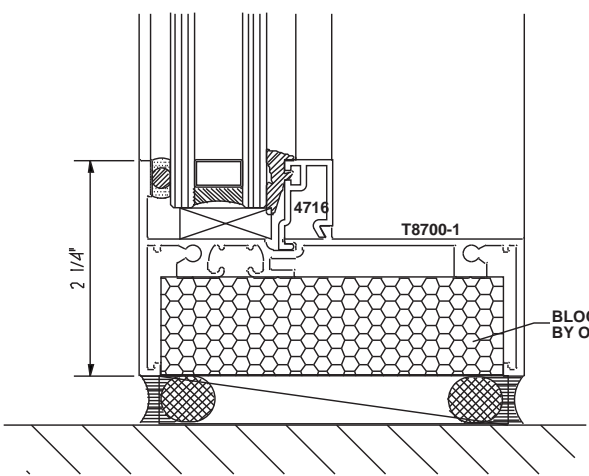
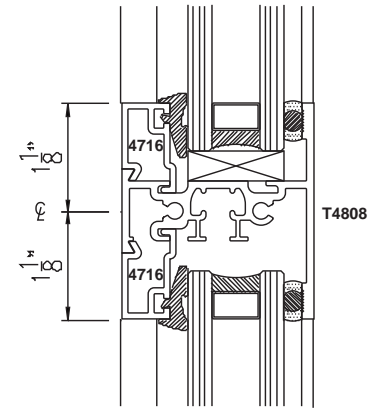
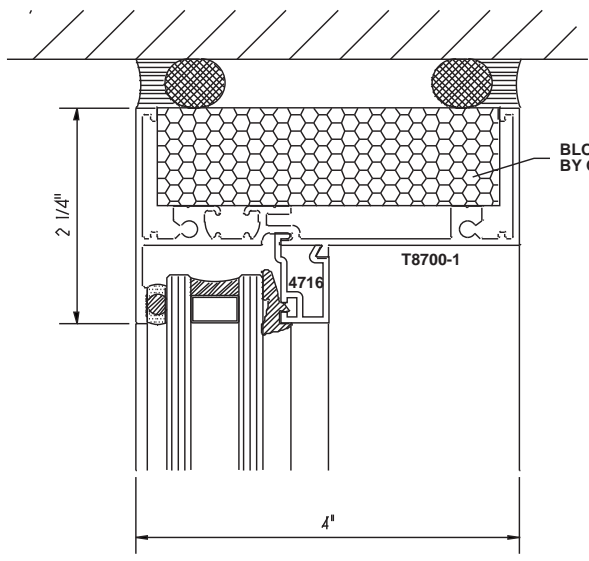
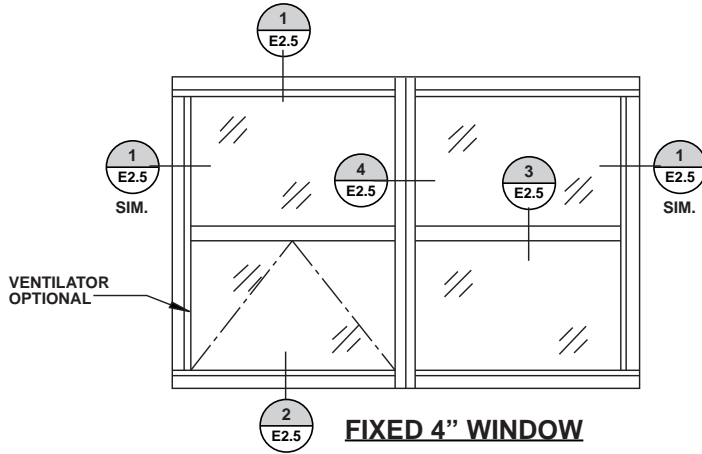
REV. 1.1

TOLL FREE • 800-454-4304 PHONE • 425-483-6226 FAX • 425-486-7878

7533 WEST BOSTIAN ROAD WOODINVILLE, WASHINGTON 98072

DETAILS

E2.4



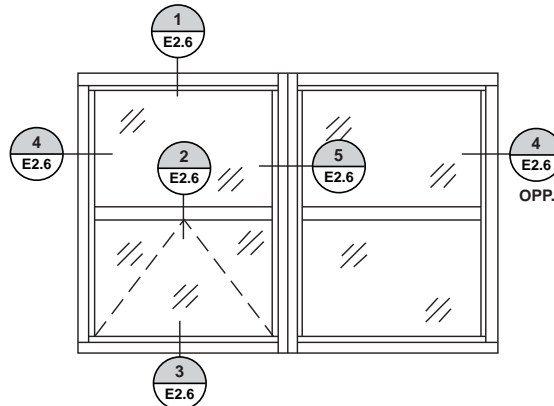
REV. 1.1

TOLL FREE • 800-454-4304 PHONE • 425-483-6226 FAX • 425-486-7878

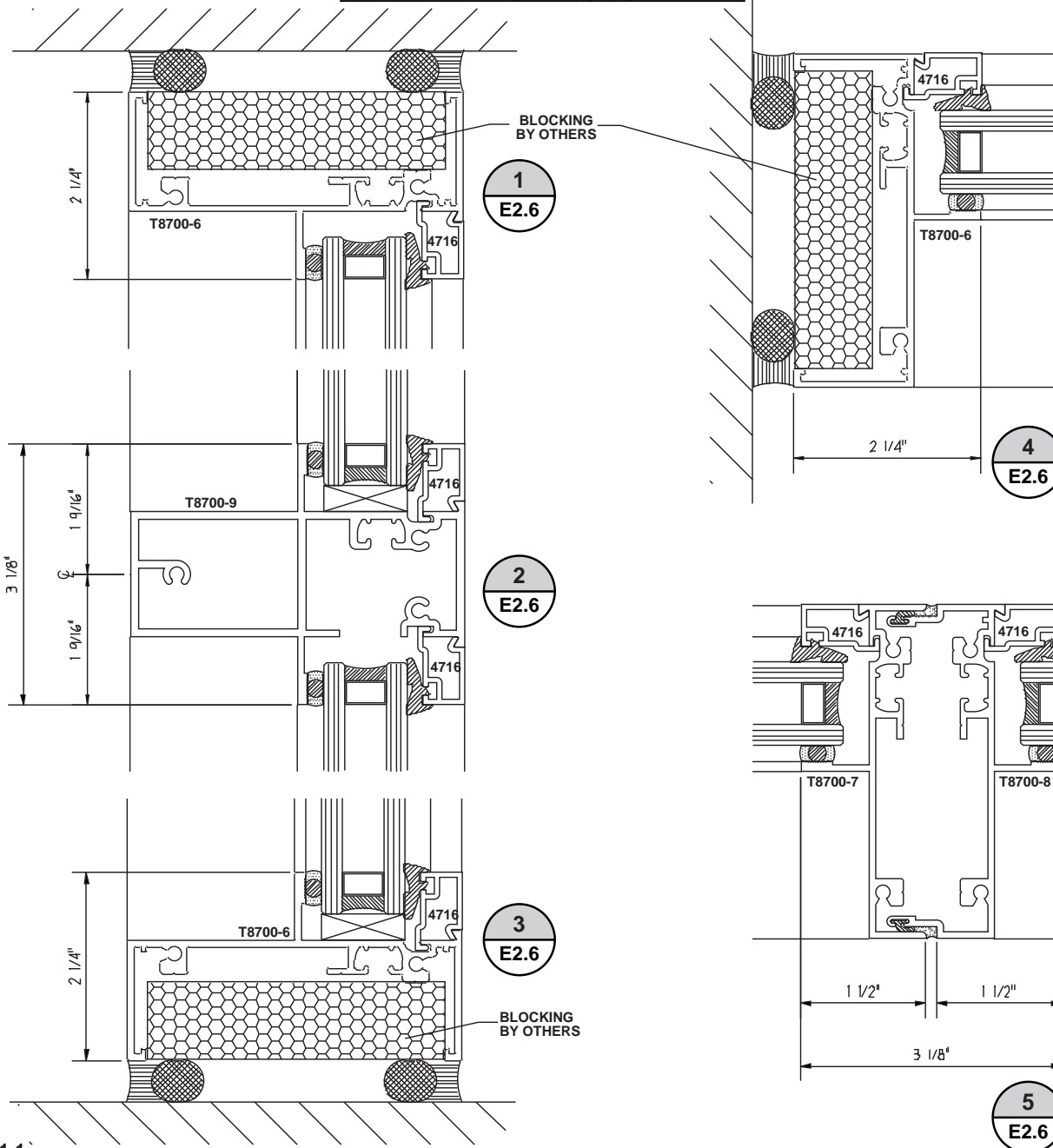
7533 WEST BOSTIAN ROAD WOODINVILLE, WASHINGTON 98072

DETAILS

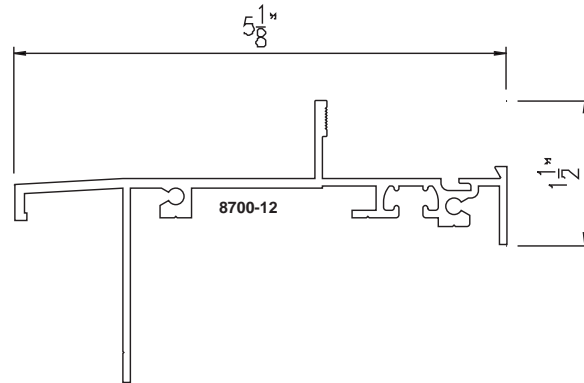
E2.5



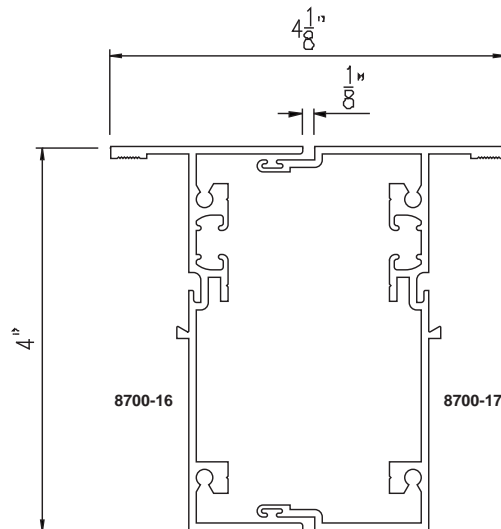
FIXED 4" WINDOW W/O SUB-FRAME



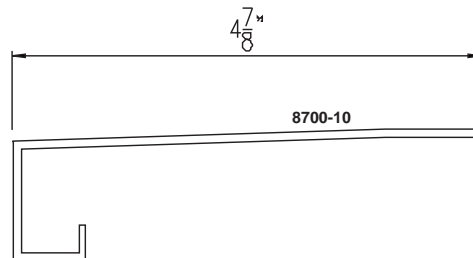
REV. 1.1



**NAIL FIN PERIMETER FRAME
INSIDE GLAZED**



**HEAVY MULLION
INSIDE / OUTSIDE GLAZED**



SILL EXTENSION

REV. 1.1

TOLL FREE • 800-454-4304 PHONE • 425-483-6226 FAX • 425-486-7878

7533 WEST BOSTIAN ROAD WOODINVILLE, WASHINGTON 98072

DETAILS

E2.7